

# !WARNING!

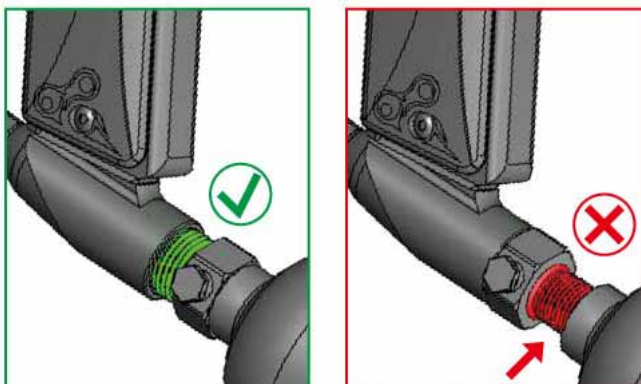
## IMPORTANT SAFETY INSTRUCTION AND GUIDELINES

- This Paintball Marker is NOT A TOY. Misuse can cause serious injury or death.
- Recommend 18 years or older to purchase this product. Person under 18 must have adult supervision.
- Read this manual, understand and follow the manual instructions for using this product.
- Eye and face protection specially designed for paintball use, must be worn by user and persons within range at all times.
- Treat all paintball markers as if it were loaded and able to fire.
- Never look down the barrel or breech area of a marker.
- Always use barrel blocking device when the marker is not in use.
- Always chronograph this marker before playing paintball.
- Never shoot any marker at velocities exceeds 300 FPS (Feet Per Second), or velocities which is greater than local fields or national laws allow.
- Ensure all air lines and fittings are tightened and secured before installing the air tanks.
- Do not shoot at people, animals, houses, cars or anything is not related to the sport of paintball.
- Always keep the marker in Safe mode until ready for use.
- Fire only 0.68 caliber paintballs with this marker.
- Always make sure the bolt is in the un-cocked position when marker is not in use.
- Any modifications or tampering of original factory parts will cause all warranties and liabilities from Azodin Paintball.
- This owner's manual should always accompany this marker for reference and in the event of resale and new ownership.

# !WARNING!

## IMPORTANT CO2/ HPA AIR TANK SAFETY INSTRUCTION AND GUIDELINES

- Tank valves must be installed or removed by qualified personnel.
- All tanks must be retested before the expiration date.
- Improper use, filling, storage of this air tank may cause death, serious injury and property damage.
- Air tanks must be filled only by properly trained personnel.
- Do not over pressurize. Do not expose pressurized tanks to temperatures in excess of 130F° degrees (54°C).
- Do not expose tanks to corrosive materials and do not clean with caustic cleaners.
- Do not alter tanks in any way.
- Tanks heated up to a temperature of 250F° degrees (54°C) or more must be condemned or re-qualified.
- Keep air tanks out of reach of children.
- The valve should NEVER detach from the tank canister. Should this occur, seek assistance from a qualified airsmith immediately.
- Air tanks are use for the sport of paintball only.



**STOP IMMEDIATELY**

CO2 or HPA/ N2 Air tanks will have enough force to fly off and cause serious injury or death if the valve unscrews from the tank head.

Look at the valve when removing the tank from the marker's Bottom ASA (A091). Make sure that the valve is turning with the tank instead of staying with the marker.

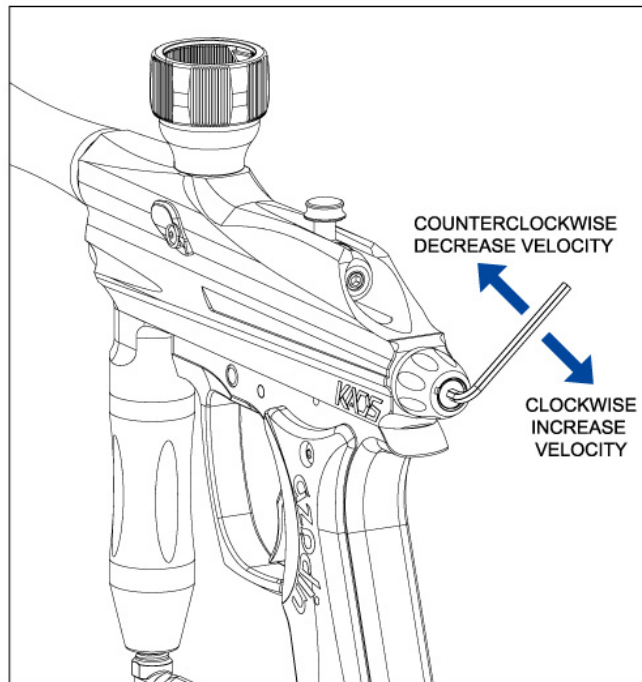
**STOP IMMEDIATELY** if valve starts to unscrew from the tank itself. Screw the tank back onto the marker's Bottom ASA adapter and contact a qualified airsmith for further assistance.

# GETTING STARTED

1. First, place the BARREL BLOCKING DEVICE over the barrel.
2. Always point your marker at a "SAFE" direction before use. To use, push the safety button from the "PUSH SAFE" side of the grip frame. Doing this will put the marker in a lock safe mode. To unlock the safe mode, point the marker in the safe direction, and push the safety button towards the "PUSH SAFE" side of the grip frame.
3. Firmly screw in the CO2/ HPA/ N2 air tank to the bottom ASA (A091). Tighten the air tank clockwise all the way in the marker's bottom ASA.  
**CAUTION:** Never use any hand tool to screw air tank to the bottom ASA.
4. Attach a paintball hopper/ loader to the marker's feed neck.
5. Remove the barrel blocking device and unlock the safe mode.  
**CAUTION:** Now the marker is LIVE, pulling the trigger will fire a paintball. Only test your marker at the safe direction or in a proper organized paintball field.
6. Check marker's velocity FPS (Feet Per Second). Turning the velocity adjuster (P023) clockwise will increase the velocity. Counterclockwise will decrease the velocity.
7. After playing, take out all paintballs from the hopper. Then detach the hopper from the marker.  
**CAUTION:** There may be 1-2 paintballs in the breach area; take a couple more shots in a safe direction to make sure the marker is empty of paintballs.
8. Place the barrel blocking device over the barrel and push the safety button in the safe mode.
9. Unscrew the CO2/ HPA/ N2 air tanks from the marker's bottom ASA.  
**CAUTION:** Never use any hand tool to screw air tanks to the bottom ASA.
10. Store the marker in a paintball gear bag or in a safe place.

## VELOCITY ADJUSTMENTS

(INCREASE & DECREASE)

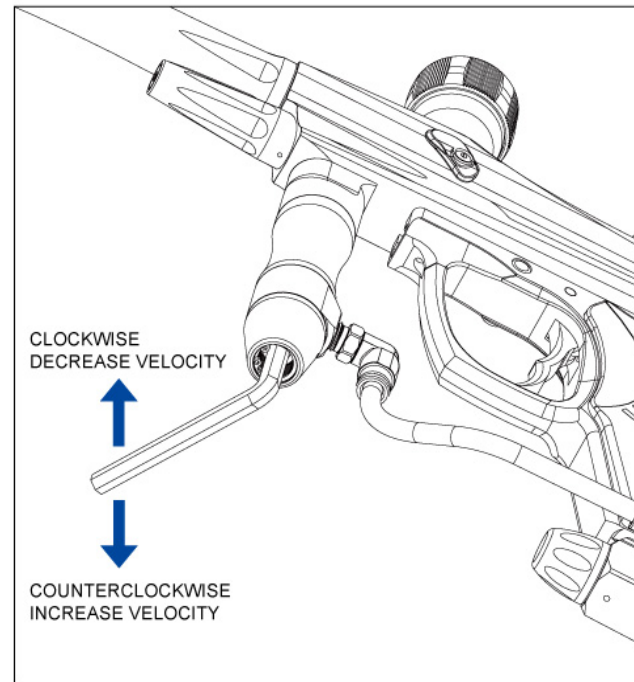


To increase your velocity FPS (Feet Per Second), use the allen wrench to turn the Velocity adjuster (P023) clockwise.

To decrease your velocity FPS (Feet Per Second), use the allen wrench to turn the Velocity adjuster counterclockwise.

## REGULATOR ADJUSTMENT

(INCREASE & DECREASE AIR PRESSURE)



To increase the input pressure use the allen wrench to turn the **Regulator Adjustment Screw (S032)** counterclockwise.

To decrease the input pressure use the allen wrench to turn the **Regulator Adjustment Screw (S032)** clockwise.

**NOTE:** Regulator is preset at the factory for optimum performance. Fine adjustment of velocity should be done with the velocity adjustor (P023) on page 7.

**NOTE:** Each quarter turn correspond to approximate increase or decrease of 20psi.

## ZERO SYSTEM

INSTRUCTION AND ADJUSTMENT

**WARNING:** Never remove the internal of the mark while the air tank is attached with the marker.

### FOR CO2 OPERATION:

**NOTE:** KAOS-D is optimized for use with HPA, in order to optimize the KAOS-D for CO2 use, please follow the instructions below.

1. Insert 3mm allen wrench into ZeRO Adjustment Screw (Z031). Turn clockwise all the way into the ZeRO housing (Z041).
2. To optimize the velocity, mark sure the rear velocity adjustment is backed all the way out. Adjust the Inline Regulator (refer to Regulator Adjustment) until the marker is shooting at 250 feet per second over a chronograph.
3. To fine-turn the marker velocity follow the direction on page 9 (refer to Velocity Adjustment)

### FOR HPA OPERATION:

**NOTE:** KAOS-D is optimized for HPA ues out of the box. Follow the instructions below only after you have used the CO2 setting and would like to reconfigure for HPA use.

1. Insert 3mm allen wrench into the ZeRO Adjustment Screw (Z031). Turn counter-clockwise until parallel with ZeRO Housing (Z041) then turn two turns in clockwise.
2. To optimize the velocity, make sure the rear velocity adjustment is backed all the way out. Adjust the Inline Regulator (refer to Regulator Adjustment) until the marker is shooting at 250 feet per second over a chronograph.
3. To optimize the marker velocity follow the direction on page 9 (refer to Velocity Adjustment)

## ADVANCE ADJUSTMENT:

The ZeRO System is a revolutionary combination of the Feather Striker and a redesigning of the Valve Engine. The ZeRO System is designed to reduce Mechanical Recoil to a minimum by balancing the output pressure of the Inline Regulator with the timing of the ZeRO System.

**NOTE: The instructions below are for fine-tuning of the ZeRO System. Do not attempt unless you have a thorough understanding of the ZeRO System operation.**

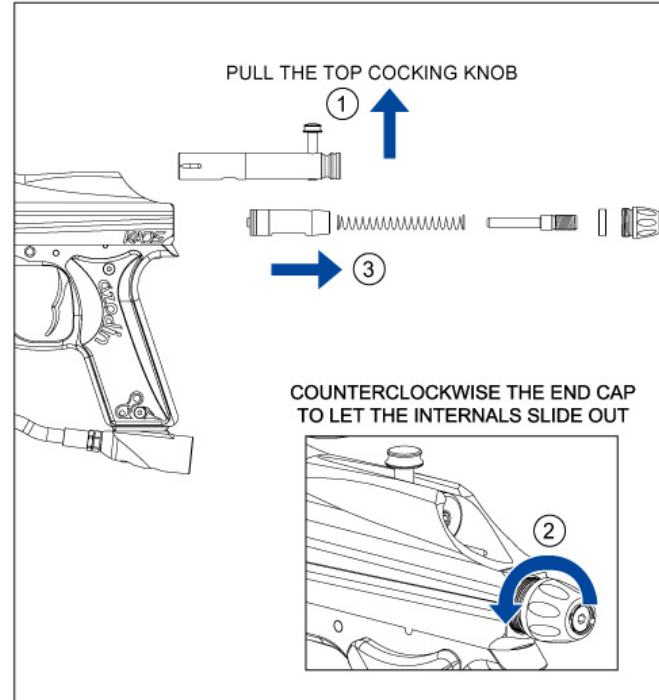
1. Insert the 3mm allen wrench into the ZeRO Adjustment Screw (Z031).
2. Turning Clockwise will tighten the ZeRO Spring to decrease valve timing. Refer to Step 2 and 3 from above to fine-tune velocity.

**NOTE: Decrease valve timing will increase air efficiency but it will cause an increase in mechanical recoil.**

3. Turning Counter-Clockwise will loosen the ZeRO to increase valve timing. Refer to Step 2 and 3 from above to fine-tune velocity.

**NOTE: Increase valve timing will decrease air efficiency but it will cause a decrease in mechanical recoil.**

## ASSEMBLY AND CLEANING



**WARNING: Never remove the internals of the marker while the air tank is attached with the marker. Always remove all paintballs, loader and air tank before disassembling the marker.**

## CLEANING AND DISASSEMBLE REAR INTERNALS

1. Lift upward on the Top Cocking Knob at the rear of Delrin Bolt. This will let the Delrin Bolt (P041) slide out from the rear of the receiver.
2. Turn the End Cap (A051) counterclockwise. This will let the End Cap (A051) and the marker's internals to slide out from the rear of the receiver. Remember to place the marker in the de-cock position and place light pressure behind the End Cap during the removal of the End Cap, this way will prevent the internals to spring out.
3. Slide the Feather Striker (P021) out of the rear of the receiver.
4. Once all the internal parts are removed, use a squeegee to clean the inside of the receiver and use a towel to clean the dirt or paint of Delrin bolt. Apply some paintball gun oil on the Striker O-Ring regularly.

## REASSEMBLE REAR INTERNALS

1. Insert the Feather Striker (P021) thru the rear of the receiver with the O-Ring facing towards the front of the marker and with the hole on the Feather Striker facing upright. While inserting the Feather Striker, apply pressure behind the Feather Striker and at the same time pull the Trigger to let Feather Striker enter the rear chamber of the receiver.
2. Insert the Feather Bumper (P024) thru the receiver and insert the Feather Spring (P022) thru the Feather Bumper.
3. Insert the End Cap (A017) with the Velocity Adjuster (P023) thru the Feather Bumper and Feather Spring.
4. Turn the End Cap (A051) clockwise to tighten it and hold the internals in place.
5. Insert the Bolt Assembly (P041) thru the rear of the receiver. Press downward on the Top Cocking Knob (At the rear of Bolt Assembly) to connect and enter the hole of Feather Striker to fasten with the Feather Striker. Use a small tool such as allen wrench to align the hole of the Feather Striker.

# TROUBLESHOOTING

**WARNING:** Always remove all paintballs, loader and air tank before disassembling the marker.

## RECOCKING ISSUES

Need Lubrication on the Striker O-Ring (R011).

Striker O-Ring is damaged or missing. Replace a correct O-Ring.

The pressure in the tank is too low and needed to be refilled.

Dirt or broken paintball shell fragments in the receiver. Check, cleaning, and disassemble rear internals.

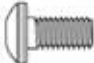



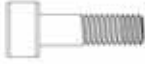






## AIR LEAKS












Air leaking from the low pressure chamber. Check Front Valve O-Ring (R012), replace and apply 1-2 drops of paintball gun oil at this O-Ring.

Air leaking from under the barrel is normally caused by worn or damaged cup seal (Z012). Check the guide for removal of Cup Seal / Valve Body.

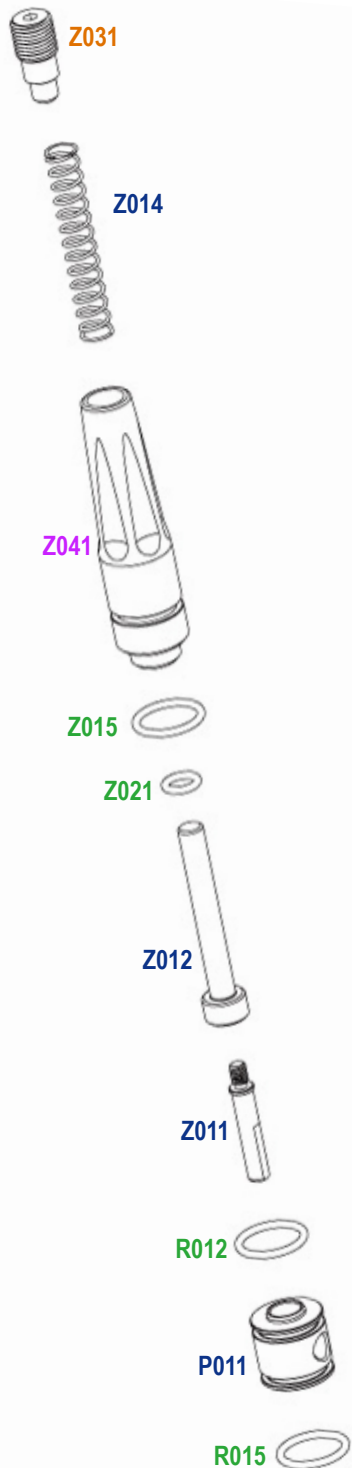
A scratch on the Valve Body will cause air leak.

Air leaking from the receiver and the Grip frame. Check Valve O-Rings and replace.

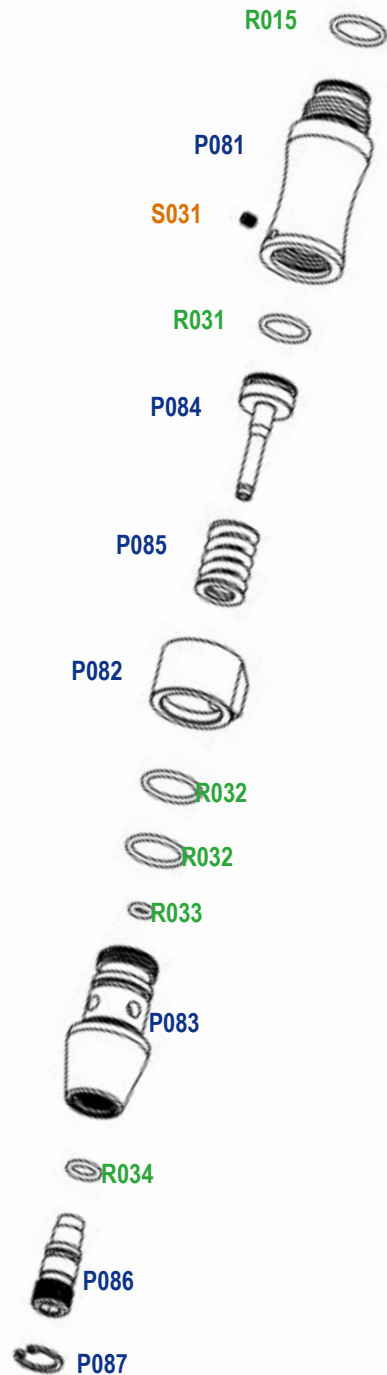
KAOS-D SCREW CHART SIZE: 1:1	PART NUMBER AND NAME
	<b>S011 M5 X 10L MAIN BODY SCREW</b>
	<b>S012 M8 X 8L VALVE RETAINING SCREW</b>
	<b>S015 M3 X 3L DETENT COVER SCREW</b>
	<b>S016 M4 X 8L GRIP PANEL SCREW</b>
	<b>S017 M5 X 14L VERTICAL ASA SCREW</b>
	<b>S031 M4 X 4L RETAINING SCREW</b>
	<b>S032 M12 X 8L REGULATOR ADJUSTMENT SCREW</b>
	<b>S091 ON/OFF BOTTOM ASA RETAINING SCREW</b>
	<b>S092 1/8-27 NPT ON/OFF BOTTOM ASA HOSE PLUG</b>
	<b>S093 M5 X 12L ON/OFF BOTTOM ASA SCREW</b>
	<b>Z031 ZeRO ADJUSTMENT SCREW</b>

KAOS-D O-RING CHART SIZE: 1:1	PART NUMBER AND NAME
	<b>R011 STRIKER O-RING (RED)</b>
	<b>R012 FRONT VALVE O-RING (CLEAR)</b>
	<b>R013 VELOCITY ADJUSTER O-RING (BLACK)</b>
	<b>R015 AZ O-RING (BLACK)</b>
	<b>R016 BARREL O-RING (BLACK)</b>
	<b>R017 END CAP O-RING (BLACK)</b>
	<b>R031 REGULATOR PISTON O-RING (CLEAR)</b>
	<b>R032 REGULATOR SWIVEL MONUT O-RING (BLACK)</b>
	<b>R033 INNER O-RING (CLEAR)</b>
	<b>R034 REGULATOR SEAL O-RONG (CLEAR)</b>
	<b>Z021 ZeRO CUP SEAL O-RING (CLEAR)</b>

## Z001 ZeRO SYSTEM



## A062 INLINE REGULATOR

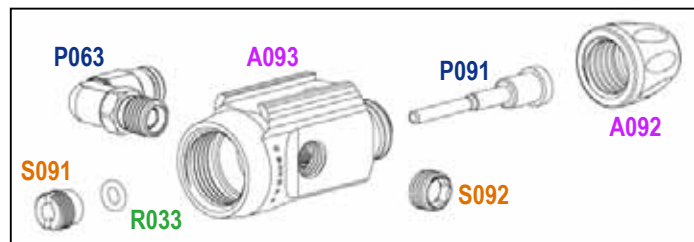


## ZeRO SYSTEM PARTS LIST

NO	PART NAME
P011	VALVE
Z011	ZeRO CUP SEAL STEM
Z012	ZeRO CUP SEAL
Z014	ZeRO SPRING
R012	FRONT VALVE O-RING (CLEAR)
R015	AZ O-RING
Z021	ZeRO CUP SEAL O-RING
Z031	ZeRO ASJUSTMENT SCREW
Z041	ZeRO HOUSING

## REGULATOR PARTS LIST

NO	PART NAME
P081	MAIN REGULATOR HOUSING
P082	REGULATOR SWIVEL MOUNT
P083	REGULATOR END CAP
P084	REGULATOR PISTON
P085	REGULATOR MAIN SPRING
P086	ROCK SEAT
P087	C CLIP
R015	AZ O-RING
R031	REGULATOR PISTON O-RING
R032	REGULATOR SWIVEL MOUNT O-RING
R033	INNER O-RING
R034	REGULATOR SEAL O-RING
S031	RETAINING SCREW



## ZeRO SYSTEM PARTS LIST

NO	PART NAME
P063	ON/OFF ASA 90 DEGREE FITTING
P091	ON/OFF BOTTOM ASA STEM
R033	INNER O-RING
S091	ON/OFF BOTTOM ASA RETAINING SCREW
S092	ON/OFF BOTTOM ASA HOSE PLUG
A092	ON/OFF BOTTOM ASA CAP
A093	ON/OFF BOTTOM ASA MAIN BODY

## KAOS DELUXE PARTS LIST

NO	PART NAME	NO	PART NAME
P011	VALVE	S015	DETENT COVER SCREW
P021	FEATHER STRIKER	S016	GRIP PANEL SCREW
P023	VELOCITY ADJUSTER	A011	KAOS BODY
P024	FEATHER BUMPER	A031	VERTICAL ASA
P025	FEATHER SPRING	A051	END CAP
P031	BALL DETENT	A071	GRIP FRAME ASSEMBLY
P032	DETENT COVER	A081	GRIP PANEL
P041	BOLT ASSEMBLY	A091	ON/OFF BOTTOM ASA
P051	TWIST LOCK FEEDNECK	A202	14" SINGLE BARREL
P063	90 DEGREE ELBOW	Z001	ZeRO SYSTEM
P072	MACROLINE HOSE		
R011	STRIKER O-RING (RED)		
R013	VELOCITY ADJUSTER O-RING		
R015	AZ O-RING		
R016	BARREL O-RING		
R017	END CAP O-RING		
S011	MAIN BODY SCREW		
S012	VALVE RETAINING SCREW		

# KAOS-D DELUXE EXPLODED VIEW

